

## eFOLDi Lite Armrest Fitting Guide.



### Tools Required:

3mm hex key  
4mm hex key  
5mm hex key

1.



Check the drill positions in the framework.

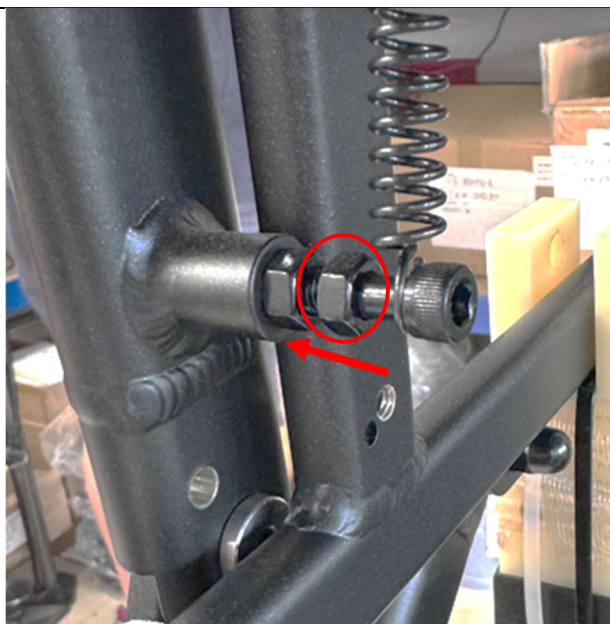
Check all armrest components are present as per enclosed assembly instructions.

2.



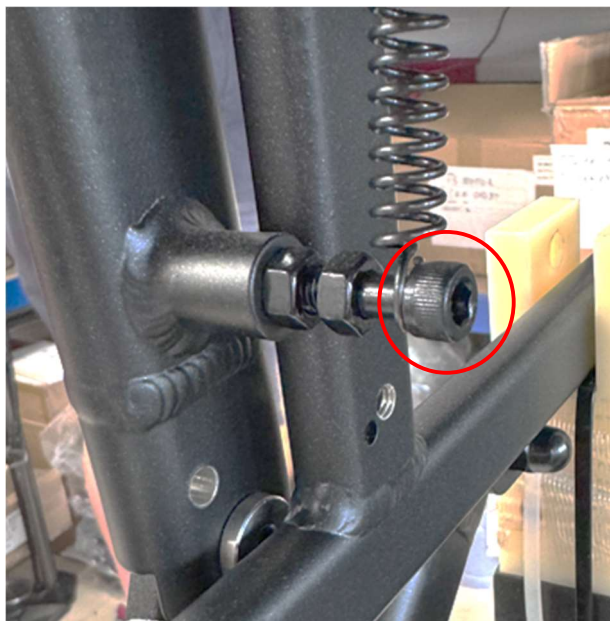
Remove the seat pads from the frame – this will make it easier to fit the armrest kit.

3.



[SEE VIDEO 1](#)

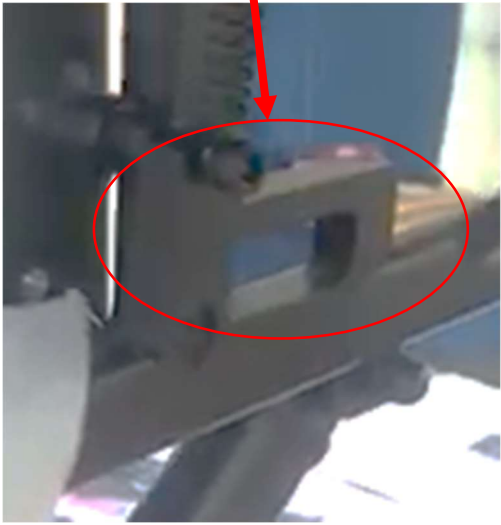
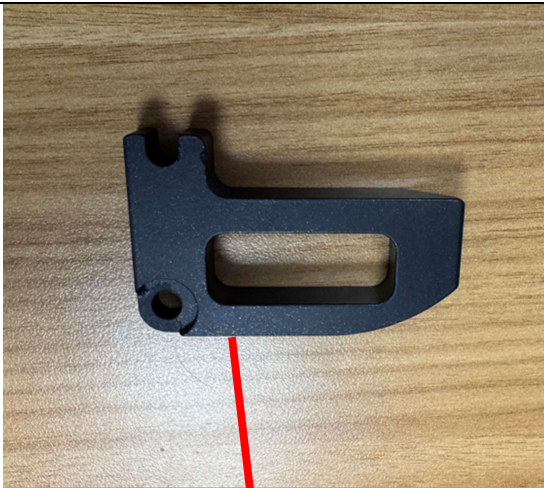
Tighten the nut as shown, so it is touching the nut fixed to the frame, so the lock block can be fitted.



Unwind the bolt if needed, to fit the lock block



**Step 3.  
Cont'd.**



Fit the lock block, adjusting the bolt to secure.

4.



Fit the spacer and M6 x 70 bolt, applying thread lock to the bolt.

[SEE VIDEO 2](#)



Spacer



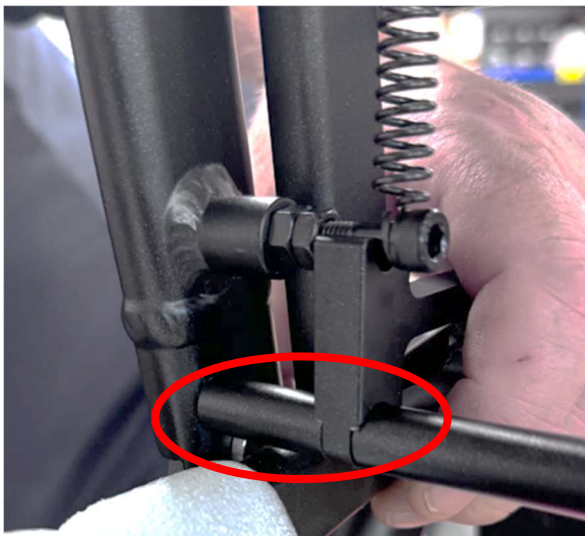
Bolt runs through the frame, spacer and lock block

5.

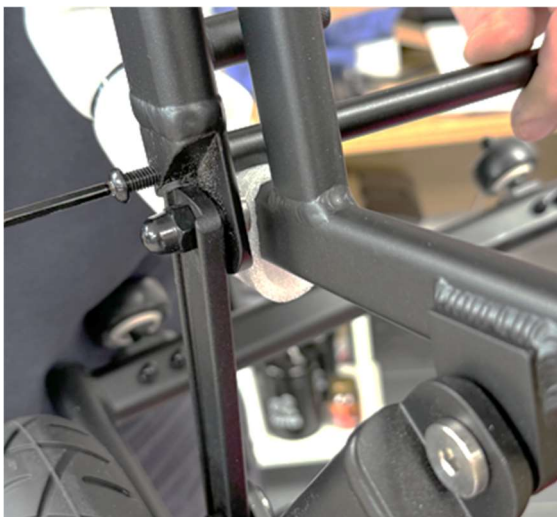


Fit the backrest lock bar using the M6 x 30 bolt.

[SEE VIDEO 3](#)

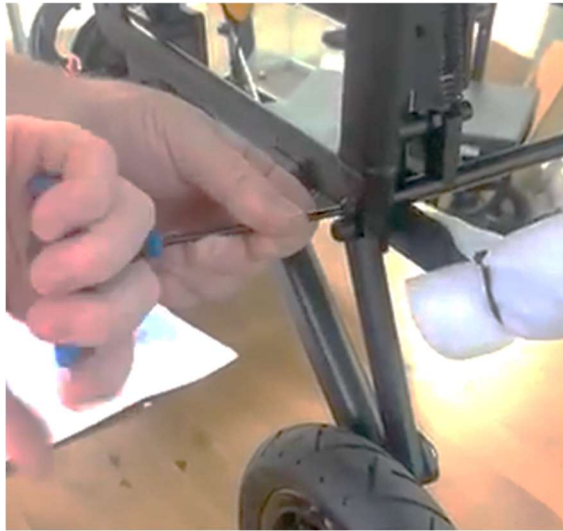
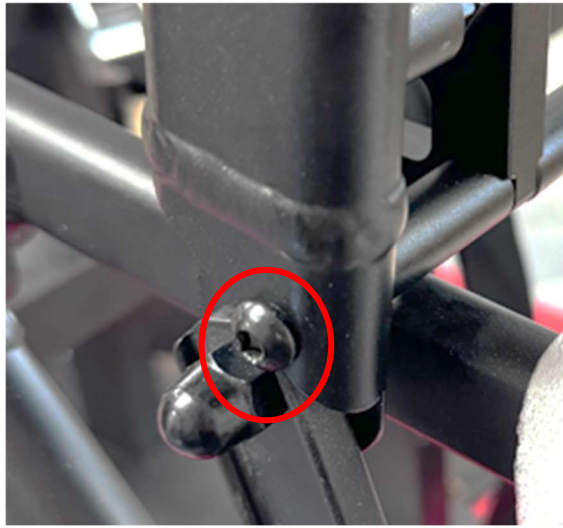


First, fit the bar to the end of the M6 x 70 bolt, already in place securing the spacer and lock block bracket.



Then on the other side, secure using the M6 x 30 bolt.

6.



Tighten up the M6 x 70 bolt.

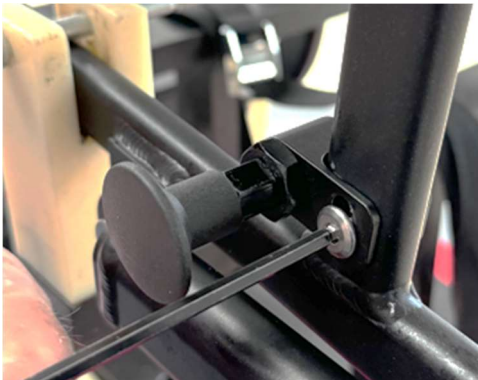
[SEE VIDEO 4](#)

7.



Check all components are secured by trying to move the back rest forwards and backwards. It should be locked in place

8.



With the backrest in the **DOWN** position, fit the backrest release toggle.

[SEE VIDEO 5](#)

9.



Check the toggle pin sits correctly in the bracket by raising the back rest.

[SEE VIDEO 7](#) for correctly locating backrest

The toggle handle should be flush with the toggle stop, this indicates the pin is fully engaged and the seat back will not move when in the upright position.

Check the seat back is secure by trying to fold it **without** pulling the backrest release toggle.

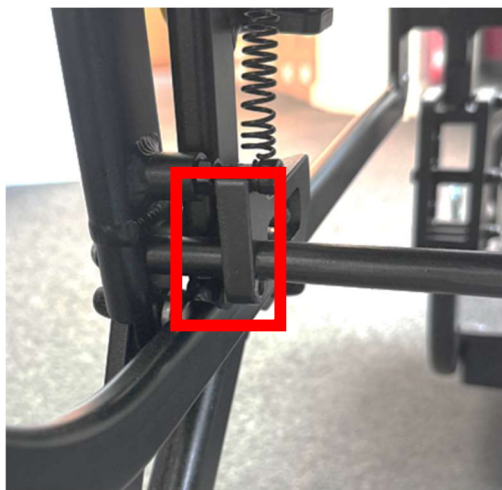
If the toggle pin does not sit in the lock block correctly:

10.



If the toggle handle does not sit flush with the toggle stop, an adjustment will be needed.

[SEE VIDEO 6](#)



Locate the back of the toggle pin retainer bracket.



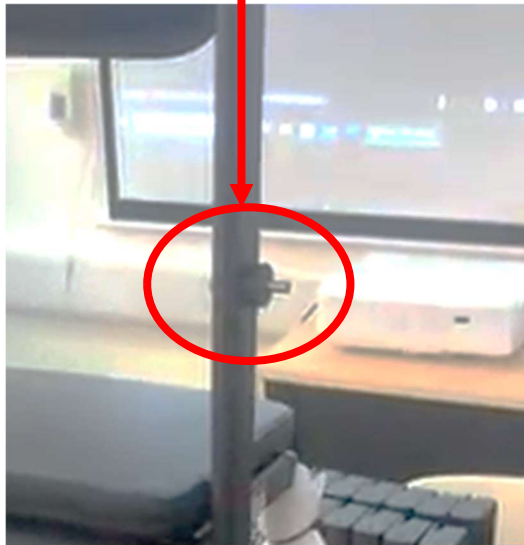
Using a piece of wood to avoid surface damage to the bracket, with a mallet, give a firm tap.

This should ensure the bracket aligns correctly allowing the toggle pin to sit correctly in the bracket.

Repeat this process until the backrest is secure when in the back position.

[SEE VIDEO 7](#) again to check the backrest is locked in correctly

11.



The armrests are supplied with the spacers and bolts. Remove the bolts before fitting.

[SEE VIDEO 8](#)

Fit the rear upper part of the armrest assembly first to the horizontal part of the frame using the M5 x 40 sleeve bolt – placing it through the frame from the inside, out fitting the spacer to the outside.

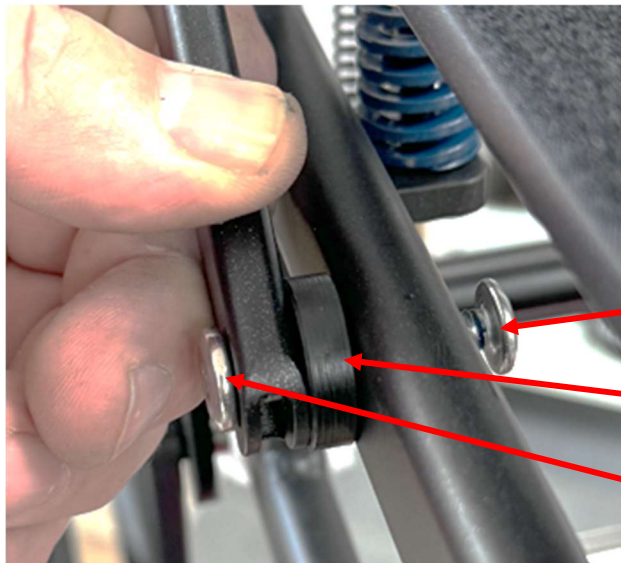
Attach the rear upper part for the armrest assembly, securing it with the M5 x 18 bolt.

12.



Fit the lower part of the assembly to the frame, using the M6 x 25 sleeve bolt, the M6 x 12 bolt and the washer. Ensuring the washer sits between the frame and armrest rod

[SEE VIDEO 9](#)



M6 x 25 sleeve bolt

Washer

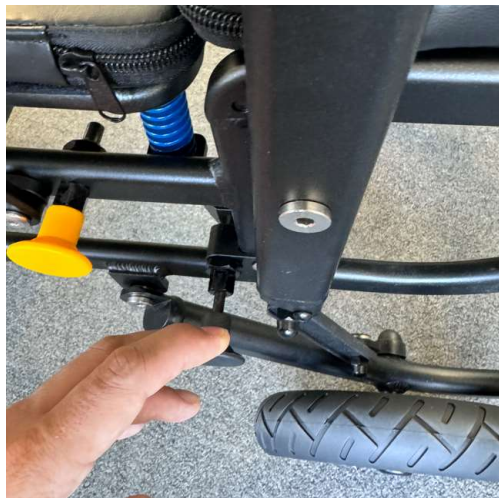
M6 x 12 bolt

SEE VIDEOS 10 & 11 for the right-hand side fitting.

[VIDEO 10](#)

[VIDEO 11](#)

13.



Refit the seat pads and check the scooter folds correctly.

[SEE VIDEO 12](#)

Use the black backrest release toggle to fold the backrest down, then fold the scooter in the usual way.

**This completes installation of the armrests.**