

eFOLDi 



# Navigator

NEW

- ✓ ultra-lightweight folding powerchair
- ✓ best-in-class performance & 2 year warranty
- ✓ unrivalled portability, convenience and versatility
- ✓ designed for individuals who want the freedom to explore and the confidence to recapture their independence - *with attendant controller fitted as standard*



**THE POWER TO GO ANYWHERE**  
*MOVE WITH EASE, LIVE WITH FREEDOM*





# Created for those who seek the freedom to explore & the assurance to regain their independence.



## TRAVEL

Folding in seconds, making it incredibly easy to use, lift, and stow away in any mode of transport—be it a car, train, bus or plane.



## STORE

Designed with convenience in mind & folds down in seconds, making it easy to manoeuvre & effortless to store in any space.



## LIVE MORE

Created to empower users to live more independently with ergonomic design and intuitive controls for a comfortable, stable ride.

QUALITY COMPONENTS & BEST IN CLASS  
**TWO YEAR WARRANTY**



### Ultra-Lightweight & Portable:

Weighing in at just 12.4kg\* to ensure effortless handling and transport, giving the freedom to explore without limits.

### Instant Folding Mechanism:

With a simple motion, the Navigator folds in seconds, allowing you to seamlessly manoeuvre & store, saving time and hassle.

### Travel-Friendly Design:

Airline friendly, this wheelchair allows you to use it up to the cabin door of your flight, making air travel smoother and more accessible than ever.



### Space-Saving Design:

Folds compactly for easy storage in cupboards, cars, or under beds, ensuring it's always ready for your next adventure.

### Detachable Battery:

Charge on the go! The detachable battery allows for on or off-board charging, so you can leave your chair in the car while you recharge, maximizing convenience.

### Worry-Free Maintenance:

Enjoy zero maintenance costs for 2 years, backed by full support & warranty:

battery - 2 years  
electronics - 2 years  
frame - 2 years

### User-Friendly Experience:

The electro-magnetic braking system simplifies driving, providing a safe and smooth experience.

### Rapid Charging & Extended Range:

Our super-efficient, high-energy density lithium battery charges in under 5 hours, allowing travel up to 8 miles—perfect for day trips or adventures.

### Comfort for Everyone:

Designed to accommodate all body shapes and sizes (up to 135kg/21st), with an adjustable footrest and memory foam seat cushion for optimal comfort.

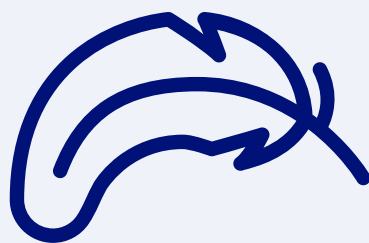
### Extra Support:

Discreet attendant controls, ensuring assistance is always at hand.

\*Weighing 12.4kg (without battery & optional accessories)



# The most advanced & lightweight folding powered wheelchair



**Lightweight & Durable:** Crafted from a magnesium-alloy frame, the Navigator weighs just 12.4kg\*, combining exceptional strength with effortless portability.



**Effortless Mobility:** Folds and unfolds in seconds with no assembly required, making it ideal for transport on trains or in car boots.



**Comfort & Convenience:** Features a removable, breathable seat cushion and a spacious seating area, plus an airline-approved battery for reliable, hassle-free travel.



On- or off-board charging for total flexibility

Weighs only 12.4kg\* so ultra-lightweight and portable

Ergonomic, easy to use joystick controls

Integrated Attendant Control for maximum flexibility

Removable, breathable seat cushion for optimum comfort

Advanced dual-drive control system

Folds in seconds so easy to store and transport

Anti-tippers for enhanced safety and reassurance

High-strength, magnesium-alloy frame for maximum durability

Electro-magnetic brake system for maximum safety/control



Rapid-charge, high performance lithium battery

Low-maintenance, puncture-proof tyres

**Accessories:**

- Cup holder (SUN0407)
- Additional cushion (SUN0441)
- Underseat storage bag (SUN0454)



## Specifications\*

Maximum Speed	4mph / 6kph
Maximum Range	8 miles / 13km
Maximum User Weight	21 Stone / 135kg / 297lbs
Climbing Ability	1:10 Gradient
Folded Dimensions	13 x 23 x 35 inches / 34 x 59 x 89cm
Weight (excl. battery & optional accessories)	27lbs / 12.4kg
Weight (incl. battery & excl. optional accessories)	31lbs / 14kg
Braking System	Electro Magnetic Brake System
Airline friendly	Yes

\* Specifications may vary due to manufacturing tolerances

\*Weighing 12.4kg (without battery & optional accessories)

# “A life changer for people who rely on a wheelchair”

“I love this new model - it's superior to the Power Chair in everyway”

“I feel I am sitting more IN rather than ON - it's super comfortable & stable”

“The cushion gives a really soft ride, even on cobbles”

“The joystick is easy to use and fits under tables so I can eat comfortably”

“It's so easy and convenient to charge - I can take the battery out and leave the chair in my car”

“It's just so well made and gives me confidence and peace of mind”

“If I get tired, my partner can use the attendant control to push me easily”

“It travels up slopes with ease and I have no fear of tipping”

“My carer has a bad back, but this is simple to fold and is easy to lift into the car”

“Perfect for holidays, it's easy to transport by car, bus, trains & planes”

“It's small size makes sharing pavements with others much easier”



# FAQs



## How light is the eFOLDi Navigator?

The eFOLDi Navigator weighs just 12.4 kg\* (27 lbs) without the battery, and 14 kg (31lbs) with the battery. It's light enough to make transport easy, but still sturdy and reliable.

## How much weight can my eFOLDi Navigator carry?

Your eFOLDi Navigator can safely carry up to 135 kg (21 stone / 297 lbs).

## How fast does the eFOLDi Navigator go?

The Navigator can travel at a comfortable speed of up to 6 km/h (4 mph), perfect for getting around town or enjoying a walk in the park.

## What kind of braking system does the eFOLDi Navigator use?

The eFOLDi Navigator uses a safe and easy-to-use electro-magnetic braking system. As soon as you let go of the joystick, the brake engages and the chair slows down gently until it comes to a stop.

## Can I adjust the footrest on the eFOLDi Navigator?

Yes, the footrest on your eFOLDi Navigator is adjustable! It has three different height settings, so you can find the most comfortable position for your legs, no matter your height.

## How long does it take to charge the eFOLDi Navigator's battery?

The battery will take up to 5 hours to fully charge..

## Is the battery safe?

The Navigator comes equipped with state-of-the-art, automotive-grade Li-Ion batteries from tier one suppliers that deliver safe, powerful, and long-lasting performance. These advanced batteries are lightweight, durable, and energy-efficient, saving you money in the long run while enhancing your ride experience.

## Does the eFOLDi Navigator have keys?

No, there are no keys with the eFOLDi Navigator. It's simple and straightforward to use, with no need for extra fuss.

## Do I have to charge the eFOLDi Navigator with the battery still in the chair?

You can charge the battery either while it's still in the chair or by removing it. The battery is detachable, so you can charge it separately, leaving your chair in the car while you recharge. It's all about making it as convenient for you as possible.

## The battery looks small – how far can the eFOLDi Navigator travel on a full charge?

The eFOLDi Navigator can typically travel up to 8 miles on a single charge, depending on factors like terrain and your usage.

## Can I take my eFOLDi Navigator on an airplane?

Yes, you can! You'll be able to drive your eFOLDi Navigator up to the cabin door. You'll need to remove the battery and carry it with you during the flight, but your chair will be safely stored in the hold. When you land, your Navigator will be returned to you. Please check with your airline before travelling.

## Do I need to register my eFOLDi Navigator with the DVLA?

No, there's no need to register your eFOLDi Navigator with the DVLA.

## Can I switch the controller to the other side of the chair?

Yes, you can! The controller is easily movable, so you can adjust it to whichever side is most comfortable for you.

## Can someone push the eFOLDi Navigator for me?

Yes, if you need a little extra help, the eFOLDi Navigator has an "attendant control" feature. This allows someone to either push you using the motor for assistance or disengage the motor and push the chair manually like a regular wheelchair.

\*Weighing 12.4kg (without battery & optional accessories)

# The eFOLDi Advantage:

## Precision Engineering for Unmatched Performance, Durability, and Style



### **1. Ultra-Light, High-Strength Magnesium Alloy Frame**

Made from advanced magnesium alloy, which is 3 times stronger than aluminum. This high-tech material offers superior impact resistance, ensuring a smooth, comfortable ride with exceptional durability.



### **2. Meticulous Weight Optimization**

Every component of the eFOLDi Navigator is carefully engineered to reduce weight while maintaining the highest standards of strength and longevity. This attention to detail results in a lighter, more efficient ride without compromising quality.



### **3. Premium Automotive-Grade Li-Ion Batteries**

The Navigator comes equipped with state-of-the-art, automotive-grade Li-Ion batteries that deliver powerful, long-lasting performance and an unrivalled 2-year warranty. These advanced batteries are lightweight, durable, and energy-efficient, saving you money in the long run while enhancing your ride experience.



### **4. Advanced Brushless Motor & Electro-Magnetic Braking Technology**

We use a custom-designed, high-performance brushless motor that is powerful, energy-efficient, and exceptionally lightweight. This cutting-edge motor optimizes performance while keeping the Navigator agile and responsive. For added safety and peace of mind, the vehicle features an advanced electro-magnetic braking system, providing smooth, reliable stops when needed.



### **5. Effortless Folding and Convenience**

Our one-piece folding design is quick and easy, requiring no assembly. The ergonomic, user-friendly mechanism makes it simple to fold and unfold, reducing effort and offering ultimate convenience for on-the-go users.

## **The eFOLDi Difference: Where Innovation Meets Quality**

At eFOLDi, we believe in delivering not just mobility, but a product that combines cutting-edge engineering with unmatched quality, style, and performance.

# Navigator Power Chair

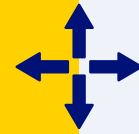
- ★★★★★  
Lightweight
- ★★★★★  
Comfort
- ★★★★★  
Ease of use
- ★★★★★  
Peace of Mind

**IMPROVED**



### Lighter & Stronger:

The Navigator features a magnesium alloy frame, making it 20% lighter and more durable than the Powerchair, offering improved strength while reducing overall weight.



### Better Fit for More Users:

With a bigger seating area and adjustable footrest, the Navigator accommodates a broader range of body shapes and heights, providing greater comfort and support for users.



### Enhanced Performance:

The Navigator is equipped with a larger, more powerful battery and a more efficient motor, delivering improved performance with longer range and smoother driving experience, especially on gradients and longer journeys. The electro-magnetic braking system also provides more consistent and responsive braking.



### Superior Warranty:

The Navigator offers a best-in-class warranty of 2 years for the battery and 2 years for the electronics and chair, providing peace of mind and long-term value.



**NOW**  
20%  
lighter

# Tech-Spec Comparison



VS



	eFOLDi Powerchair	eFOLDi Navigator	Navigator Notes
<b>Size and Weight</b>			
Weight (with battery)	17kg (inc. 2 batteries)	14kg*	Magnesium-alloy frame for an exceptionally lightweight & durable design. (*excludes optional accessories)
Weight (without Battery)	15kg	12.4kg*	
Battery Weight	2 * 1kg	1.7kg	Single battery design for simplified operation and reduced weight.
Folded Size	340 x 580 x 920mm	340 x 590 x 890mm	
Unfolded Size	960 x 580 x 920mm	1080 x 590 x 890mm	
Seat Width	420mm	450mm	Larger, deeper seat designed for enhanced comfort and support for a more diverse range of user body shapes.
Seat Depth	440mm	490mm	
Back Height	400mm	420mm	
Footrest size (Depth/Width)	290 x 290mm	290 x 320mm	Enhanced adjustable footrest for a wider range of user heights and added heel protector to guard against wheel contact.
<b>Warranty</b>			
Warranty- Frame	1 year	2 years	Extended warranty for added peace of mind and worry-free ownership.
Warranty- Battery	1 year	2 years	
<b>Technical Specifications</b>			
Frame Material	Aluminium	Magnesium Alloy	Magnesium-alloy frame for an exceptionally lightweight & durable design.
Motor	2x 200W 24VDC	2x 150W 24VDC	Equipped with advanced motors that consume less power for improved efficiency.
Braking System/Electronics	Electric	Electro Magnetic	New electromagnetic braking system enables automatic braking on inclines for enhanced safety.
Bypass Mode for Freewheel	Electronic	Manual	Manual clutches enable zero resistance in free-wheel mode, making it easy to push like a manual chair. (The powerchair's electronic bypass always provides some resistance in free-wheel mode.)
Battery	2x 24V, 5.2Ah Lithium Ion	24V, 10Ah Lithium Ion	Navigator shares the same battery system as the eFOLDi Lite allowing for easier stocking of both products.
Attendant Control	YES	YES	Same as existing PC
Folding Arms	YES	YES	
Wheels- Front	200mm / 7.8 inches	200mm / 7.8 inches	
Wheels- Rear Drive	300mm / 11.8 inches	300mm / 11.8 inches	
Tyre Type	Solid	Solid	
<b>Performance</b>			
Carry Capacity	135kg / 297lbs / 21 Stone	135kg / 297lbs / 21 Stone	The Navigator offers the same performance as the Powerchair, but uses less power thanks to its advanced design and magnesium-alloy frame.
Range	13km / 8 Miles	13km / 8 Miles	
Max Speed	4mph / 6kmh	4mph / 6kmh	
Max Incline	1:10 Gradient (6°)	1:10 Gradient (6°)	
Turning Radius	1200mm / 40 inches	1200mm / 40 inches	
Maximum Curb Height	40mm / 1.5 inches	40mm / 1.5 inches	

# Tech-Spec Competitor Comparison



VS



	eFOLDI Navigator	Sunrise Medical Q50 R Carbon	Navigator Notes
<b>Size and Weight</b>			
Weight (with battery)	14kg*	15.9kg	Magnesium-alloy frame for an exceptionally lightweight & durable design. (*excludes optional accessories)
Weight (without Battery)	12.4kg*	14.5kg	
Battery Weight	1.7kg	1.4kg	Single battery design for simplified operation and reduced weight.
Folded Size	340 x 590 x 890mm	370 x 570 x 767mm	
Unfolded Size	1080 x 590 x 890mm	923 x 570 x 928mm	
Seat Width	450mm	440mm	Larger, deeper seat designed for enhanced comfort and support for a more diverse range of user body shapes.
Seat Depth	490mm	420mm	
Back Height	420mm	464mm	
Footrest size (Depth/Width)	290 x 320mm	140 x 317mm	Enhanced adjustable footrest for a wider range of user heights and added heel protector to guard against wheel contact.
<b>Warranty</b>			
Warranty- Frame	2 years	2 years	Extended warranty for added peace of mind and worry-free ownership.
Warranty- Battery	2 years	6 months	
<b>Technical Specifications</b>			
Frame Material	Magnesium Alloy	Carbon Fibre	Magnesium-alloy frame for an exceptionally lightweight & durable design.
Motor	2x 150W 24VDC	250W 24VDC	Equipped with advanced motors that consume less power for improved efficiency.
Braking System/Electronics	Electro Magnetic	Electro Magnetic	New electromagnetic braking system enables automatic braking on inclines for enhanced safety.
Bypass Mode for Freewheel	Manual	Manual	Manual clutches enable zero resistance in free-wheel mode, making it easy to push like a manual chair. (The powerchair's electronic bypass always provides some resistance in free-wheel mode.)
Battery	24V, 10Ah Lithium Ion	24V, 10Ah Lithium Ion	Navigator shares the same battery system as the eFOLDi Lite allowing for easier stocking of both products.
Attendant Control	YES	NO	Comes standard with an attendant control for optimal care and mobility.
Folding Arms	YES	YES	
Wheels- Front	200mm / 7.8 inches	165mm / 6.5 inches	
Wheels- Rear Drive	300mm / 11.8 inches	210mm / 7.8 inches	
Tyre Type	Solid	Solid	Puncture-proof tires for worry-free use and convenience.
<b>Performance</b>			
Carry Capacity	135kg / 297lbs / 21 Stone	136kg / 300lbs / 21 Stone	
Range	13km / 8 Miles	12km / 7.5 Miles	Optimal range for longer journeys, providing peace of mind between recharges.
Max Speed	4mph / 6kmh	4mph / 6kmh	
Max Incline	1:10 Gradient (6°)	1:10 Gradient (6°)	
Turning Radius	1200mm / 40 inches	800mm / 31.5 inches	
Maximum Curb Height	40mm / 1.5 inches	40mm / 1.5 inches	